



# Al Hamdi

الحمدي

**Al Hamdi**





## Contents

▶ <i>Mission Statement</i>	3
▶ <i>Al Hamdi Group Organisational Structure</i>	4
▶ <i>Al Hamdi Group Businesses</i>	5
▶ <i>The three stages of the business</i>	6
▶ <i>Al Hamdi Industrial Group</i>	7
Al Nahdah Automobile Company	8
Al Hamdi Recycling Plants	8
Al Tamkeen Real Estate Company	9
Al Hamdi Recycling Plants	9
Al Hamdi Cold Storage and Warehousing	9
Maradeen Trading Company	10
Al Hamdi Medical Industries	10
Al Hamdi Tourism and Recreation Company	11
▶ <i>Personal CV of Abdulkarim Al Hamdi</i>	12
▶ <i>Personal CV of Awad Awayed Al Hamdi</i>	13
▶ <i>Logistics</i>	14
▶ <i>Recruitment</i>	15
▶ <i>UK Consultants</i>	49

“The city of Yanbu epitomises practicality, efficiency and respect for tradition, and represents one of Saudi Arabia’s supreme achievements.”

Quote from

[http://www.arab.net/saudi/sa\\_yanbu.htm](http://www.arab.net/saudi/sa_yanbu.htm)

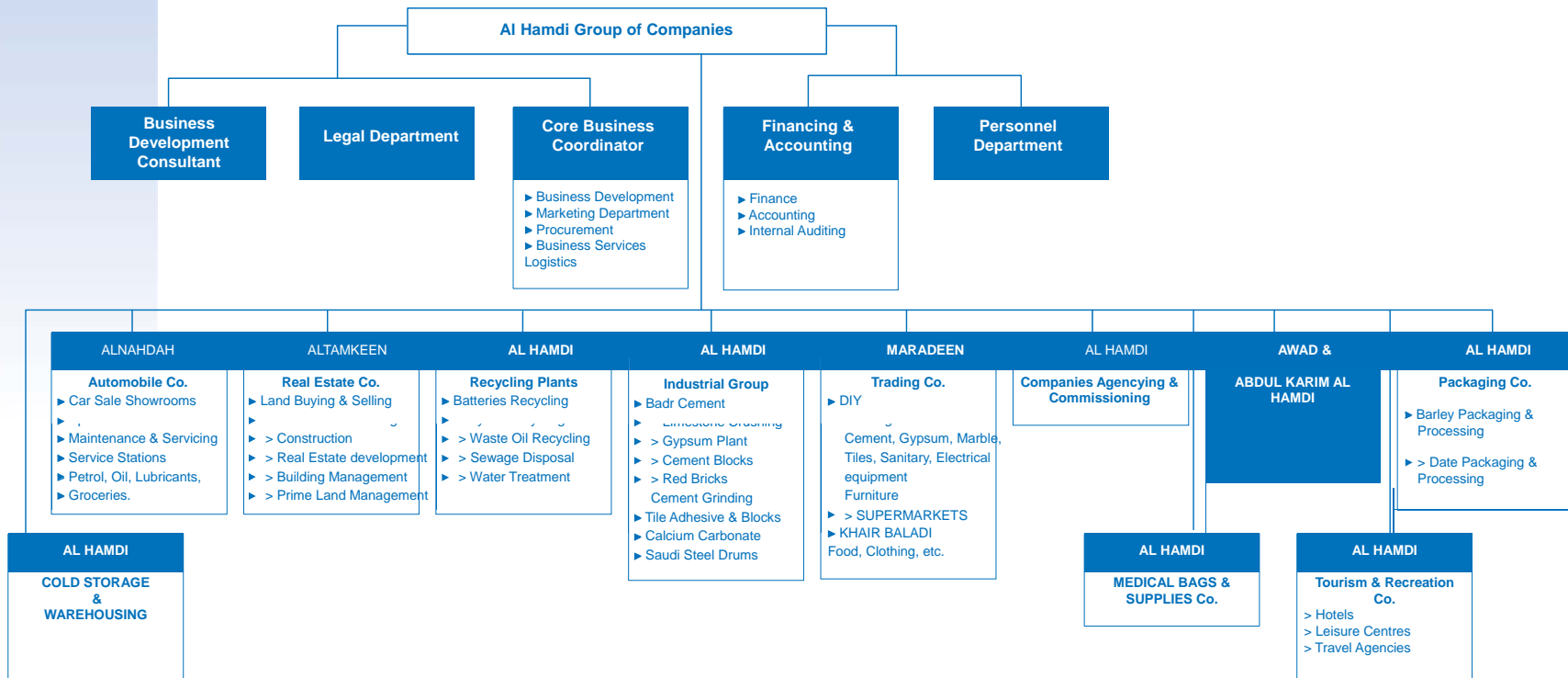


Our aim is to develop an international business which financial experts and employees, consultants and residents are excited and inspired by.

As experienced entrepreneurs, we are dedicated to provide exceptional products and services to delight our investors, employees and customers. We are proud that our business group is of such exceptional quality, innovative approach, cost effective procedures and fully harmonised.

We offer long term stability in an expanding and challenging area through developing business opportunities which will ensure economic growth.

In order to achieve this, our portfolio is aligned with the diverse needs and emerging markets providing employment opportunities which capture the benefits of the present economic growth in the Kingdom of Saudi Arabia.





*The Al Hamdi Group is a unique business organisation comprising of eleven business areas. These divisions and departments are worked within a goal driven structure focussing on product innovation, corporate awareness and employee involvement. Each business group is alive with innovation, research and market analysis.*

- ▶ ***Al Hamdi Cold Storage and Warehousing***
- ▶ ***Al Nahdah Automobile Company***
- ▶ ***Al Tamkeen Real Estate Company***
- ▶ ***Al Hamdi - Recycling Plants***
- ▶ ***Al Hamdi - Industrial Group***
- ▶ ***Maradeen Trading Company***
- ▶ ***Al Hamdi Companies Agencying and Commissioning***
- ▶ ***Al Hamdi Medical Industries***
- ▶ ***Awad & Abdul Karim Export & Import***
- ▶ ***Al Hamdi Packaging Company***
- ▶ ***Al Hamdi Tourism & Recreation Company***



*It is well known that existing practices in today's business world adopt extremely formalised patterns of planning, implementation and evaluation. These three elements are echoed within our structure at three levels, Environmental, Strategic and Organisational.*

▶ **Environmental**

The Al Hamdi group concentrates on the future political and economic drivers within the Kingdom of Saudi Arabia. We are actively involved and participate in forums enabling us to be aware of any changes which may affect our business environment.

▶ **Strategic**

Focusing on our diverse business needs, we take an active interest in decisions and influences that will determine the direction of business activities.

▶ **Organisational**

Our business structure reflects our diverse interests throughout the region and is set to embrace future changes and needs as we embark onto an international market.



# Al Hamdi group

## ► Al Hamdi Industrial Group

This group of companies provides an exciting array of activities including the Badr Cement Company which will produce over 3 million tons of cement per annum each line and 5,000 per day. This business is one of the key activities for the group and in tandem with the expansion of real estate and industrial growth in the region. The plant will be producing cement for the local market as well as for export.

The Badr Cement Company involves all aspects of cement working from earth digging and moving, raw material transportation through our logistics division, and on-site crushing and grinding. This in turn provides opportunities for gypsum (producing 600 tons of Plaster of Paris per day), red bricks (2,100 tons of various kinds of bricks daily), cement block, cement grinding (producing 2,000 tons of cement per day), limestone crushing (8,000 tons per day).

It is projected that this facility will be fully commissioned and operational by mid 2009.





#### ► Al Nahdah Automobile Company

This business is well defined and extremely harmonious with scope for developing operations in a wider market area. This thriving business incorporates the main Nissan dealership in Yanbu, Badr, Amoloy and Tabook. Al Nahdah also provides spare parts, maintenance and servicing and there are four petrol stations at different locations in the region.

The Nissan showroom is an exciting building to view both new and used cars, fully operational with a floor space of 4,000 m2.

#### ► Al Hamdi Recycling Plants

This business includes recycling of batteries, tyres, waste oil, plus sewage disposal and water treatment. Collection operations and delivery of used batteries and tyres are carried out by the groups logistics team with other waste materials collection and disposal.





► **Al Tamkeen Real Estate Company**

Building materials and supply has been essential to fulfil the customers need in line with the growth in the economy of the Yanbu region,. Al Tamkeen Real Estate Company specialises in prime land purchasing and development, real estate development. general construction and contracting.

► **Al Hamdi Cold Storage and Warehousing**

This company specialises in providing rental facilities to both the Al Hamdi Group of companies but also to many other businesses. This is a cost effective option which can be integrated with our logistics team to provide a efficient service to our customers.



## ► Maradeem Trading Company

There are a couple of retail strings to the expertise of the Maradeem Trading Company who have been trading in Jeddah City since 2005.

**D.I.Y.:** 'Do it Yourself' construction materials including cement, gypsum, marble, tiles, sanitary ware and electrical equipment to the home enthusiastic and small business tradesmen.

**Supermarkets:** Including food, clothing and furniture, the Maradeem Trading Company is unique by providing under cover facilities in a unique construction. Khair Baladi supermarkets and hypermarkets are perceived to be of the highest of quality retailing consumer goods.

## ► Al Hamdi Medical Industries

A highly specialised and regulated factory, requiring specific manufacturing and storage requirements, this is the first medical bag factory in the Middle East with a production of 6 million bags plus disposable and surgical products.



► **Al Hamdi Tourism and Recreation Company**

This division deals primarily with hotels and the development of ideally positioned land. There is plenty of scope to further enhance this business through the development of leisure centres and travel agents to provide a consolidated tourism and recreation division in the region.

► **Al Hamdi Packaging Company**

Barley and date processing and packing are managed as a single business providing cost effective processing to imported goods from nearby Yanbu city. The barley packing station has a current capacity of 6 trucks per hour with a total of 120 tones of barley a day.





### ► Abdul Karim Al Hamdi

A Saudi Arabian national, Abdulkarim was born in 1961 and is married with 7 children. Abdul qualified in Business Administration and currently holds the role of General Manager having started in business in 1979.

Previous work experiences includes the position of Manager of the Lands and Properties Department in Yanbu Municipal, and directing business activities with sister companies. Due to his keen interest in developing opportunities for Saudi Arabian businesses, He regularly promotes activities attending and participating in Chamber of Commerce events both in the Kingdom of Saudi Arabia & abroad.

### ► Membership

- ◆ Chairman of Yanbu chamber of commerce and industry board for the last four years.
- ◆ Member of Yanbu chamber of commerce and industry board for the last four years.
- ◆ Member of Yanbu local government board
- ◆ Member of the investment committee AL Madina Almonawra town.
- ◆ Member of the high tourism Authority development in Yanbu city and Royal Commission Yanbu.
- ◆ Member of horse race club in Royal Commission, Yanbu.
  - Member of Saudi Jordanian Business Society.
- ◆ Member of Saudi Egyptian Society.
- ◆ Member of many social societies in Saudi Arabia.

### Trading Address:

K. S. A.      Yanbu P. O. Box 165 Yanbu  
Tel.:          + 966 4390 1741  
Fax:          + 966 43222 386



### ► Awad Awayed Al Hamdi

Born in 1959 and married with five children, Awad started business in 1977 and now holds the position of Chairman of Awad & Abdul Karim Al Hamdi Company. From an early age he gained valuable hands-on experience through being involved in the business; he later graduated from Cairo University as a Business Administrator. Currently Awad directs all of the companies' projects with Abdulkarim.

### ► Trading Address:

K. S. A.     Yanbu     P. O. Box 165 Yanbu  
Tel.:         + 966 43222360  
Fax:         + 966 43222 386

### Membership:

- ◆ Member in Yanbu City Council
- ◆ Member in Different Social Societies
- ◆ Member in Business Society, Yanbu





## ► Logistics

Working with all of the Al Hamdi group of companies, the logistics division supplies support to all of the groups divisions as well as other third party enterprises;

- ◆ Trucks and lorries to distribute raw material from dock to sites.
- ◆ Distribution of finished items to final destination, either retail outlets, construction sites or to third party businesses.
- ◆ Using a fleet of cars of the highest specification, providing transport options to employees and senior management conducting Al Hamdi business.
- ◆ Using the most recent technology, supporting the on-going maintenance of all machinery and distribution methods through skilled personnel.



## ► Recruitment

With a team of professional and highly qualified human resources professionals providing support to all of the business divisions, the Al Hamdi Group prides itself in its top quality recruitment processes and staff procedures.

With excellent benefits and resources, working in the Al Hamdi Group is a renowned opportunity for many people.





## **Advisors**

EN Consulting Group

Winchester House

259-269 Old Marylebone Road

London

NW1 5RA

***Thank You***